

## Appendix G

# Repro Desk Support

## Supported Repro Desk Files

PlotWorks supports Repro Desk and Apprentice JOB, VIC, PEN and SET files. Print jobs from Repro Desk containing PostScript, PDF, Calcomp, HPGL, HPGL/2, CALS, AutoCAD, DWG, and TIFF file formats are also supported.

Additional information regarding file formats follows:

- **JOB Files:** JOB files contain information, including printing parameters, about the entire Repro Desk or Apprentice job. PlotWorks supports Versions 4.21, 4.25, 4.30 and 4.30.2 JOB files.
  - **VIC Files:** This is the file format that Repro Desk uses for pre-processed files. VIC files created with both the Apprentice and Buzzsaw.com® VIC Driver for AutoCAD, are supported. PlotWorks supports VIC files created with AutoCAD 14, AutoCAD 2000, AutoCAD 2000i, AutoCAD 2002, and AutoCAD 2004. PlotWorks supports:
    - Pen tables:
      - Pen numbers
      - Pen colors
      - Pen patterns
      - Pen widths
    - Embedded raster information
      - CALS MIL-R-28002A Type 1 (CCITT G4 2D Compression)
      - Independent JPEG Group JFIF (JPEG Compression)
      - MS-Windows BMP (Uncompressed DIB)
      - Portable Network Graphics PNG (LZH Compression)
      - TIFF Version 6 (CCITT G4 2D Compression)
      - TIFF Version 6 (Uncompressed)
      - TrueVision TGA Version 2 (Uncompressed)
      - ZSoft PC Paintbrush PCX (ZSOFT PACKBITS Compression)
-

- Black and white, gray scale and color VIC files.
- Embedded Fonts: SHX and TrueType fonts.
- Embedded OLE Objects.
- **PEN Files:** This is the file format that Repro Desk uses for PEN settings. The Repro Desk pen set is only imported when opening a JOB file.
- **SET Files:** This is the file format Repro Desk uses for pattern sets.



*Word, Text, Stamp, and LDF file formats from Repro Desk are not supported by PlotWorks. However, you can print these to file using an HPGL2 or PostScript print driver and then import them into PlotWorks.*

---

## Printing Repro Desk Jobs with PlotWorks

For PlotWorks to print a Repro Desk job, the job must be exported out of Repro Desk and then imported into PlotWorks. There are a few simple methods to accomplish this depending on how your organization is set up. This section describes some of these methods.

To export jobs from Repro Desk, you can set up the Repro Desk Client to send jobs via modem, drive letter, or to a specified Network Polling directory. You can also send jobs from the Repro Desk Queue directly to a PlotWorks Network Polling directory.

To import the job into PlotWorks, you can open the job in the PlotWorks Job Editor just as you would open a PlotWorks print job, or you can use Network Polling and poll a specified directory for Repro Desk jobs.

Many jobs can be sent directly to PlotWorks without any problems. However it is necessary to process some files in Repro Desk before PlotWorks can use them.

### Processing Files before Outputting from Repro Desk

The following types of files need to be processed in Repro Desk before they are sent to PlotWorks:

- **DWG files:** DWG files must be processed in Repro Desk before they are sent to PlotWorks unless AutoCAD is used at the print location for file processing.
- **Files named the same:** If the Repro Desk job contains files that are different but have the same name, the files must be processed in Repro Desk before the job is submitted. Processing the job in Repro Desk generates VIC files with different names that PlotWorks can use.
- **Offset images:** If the original image is offset from the origin, the file needs to be processed in Repro Desk to determine the offset value.

### Using PlotWorks Network Polling for Repro Desk Jobs

One common method of printing Repro Desk jobs using PlotWorks is by using the PlotWorks Network Polling application. To use this method you set up Repro Desk to send jobs to a specific directory or Repro Desk Queue. Then you set up Network Polling to send jobs from the Network Polling Directory to PlotWorks

---

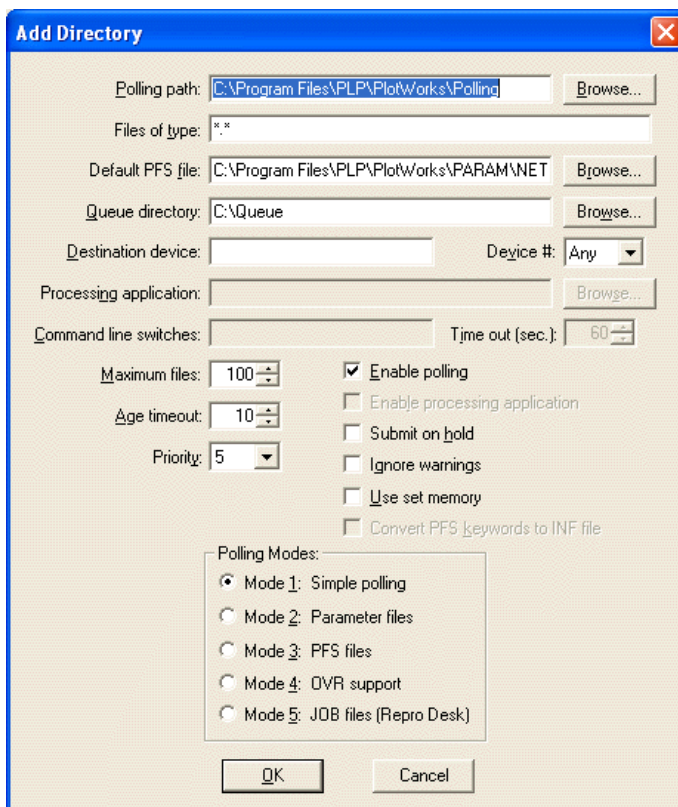
for printing. This directory or Repro Desk Queue is also referred to as the Network Polling Directory.

### Setting up PlotWorks Network Polling for Repro Desk Jobs

To set up a Network Polling directory for JOB files follow the instructions below:

21. Decide what directory to use as the Network Polling Directory. If necessary create a new directory.
22. Open the Network Polling window if it is not already open.
23. Click on the **Add Directory** button from the Network Polling tool bar. The Add Directory dialog box opens.

*Fig. G. 6  
Add  
Directory  
Dialog  
Box*



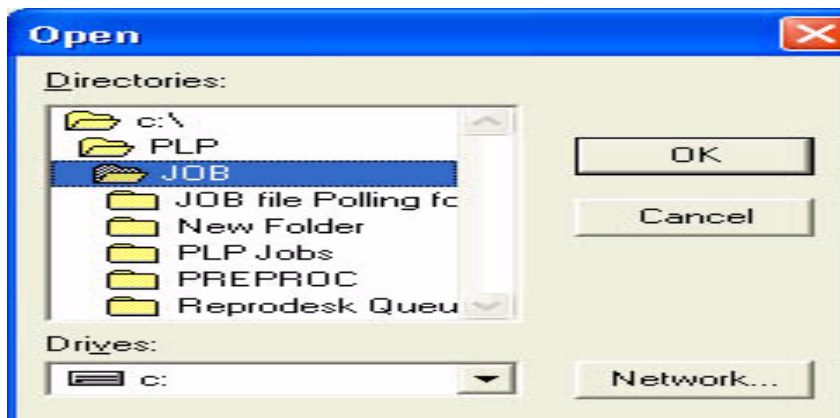
The **Add Directory** dialog box is used to configure network polling settings. It includes the following fields and options:

- Polling path:** C:\Program Files\PLP\PlotWorks\Polling (with a **Browse...** button)
- Files of type:** \*.\*
- Default PFS file:** C:\Program Files\PLP\PlotWorks\PARAM\NET (with a **Browse...** button)
- Queue directory:** C:\Queue (with a **Browse...** button)
- Destination device:** (empty text box)
- Device #:** Any (dropdown menu)
- Processing application:** (empty text box with a **Browse...** button)
- Command line switches:** (empty text box)
- Time out (sec.):** 60 (spin box)
- Maximum files:** 100 (spin box)
- Age timeout:** 10 (spin box)
- Priority:** 5 (dropdown menu)
- Enable polling:** ☒ (checked)
- Enable processing application:** ☐
- Submit on hold:** ☐
- Ignore warnings:** ☐
- Use set memory:** ☐
- Convert PFS keywords to INF file:** ☐
- Polling Modes:**
  - ☒ Mode 1: Simple polling
  - ☐ Mode 2: Parameter files
  - ☐ Mode 3: PFS files
  - ☐ Mode 4: OVR support
  - ☐ Mode 5: JOB files (Repro Desk)

Buttons at the bottom: **OK** and **Cancel**.

24. Click on the **Polling path Browse** button. The Open dialog box appears.

Fig. G. 7  
Open  
Dialog  
Box



25. From the **Drives** drop down list, select the drive that contains the directory you wish to use as the Network Polling Directory (refer to Step 1).
26. Using the **Directories** select box, select the directory you wish to use as the Network Polling Directory
27. Click on the **OK** button. The Open dialog box disappears and your directory is listed in the **Polling path** text box.
28. Select your other Network Polling options. For more information on these consult “Add a Target Directory” on page 6-6 of your PlotWorks User Guide.
29. Select the **Mode 5 Polling** radio button. Mode 5 polling is for for Repro Desk JOB files.
30. Click on the **OK** button. The Add Directory dialog box disappears and your directory is listed in the Network Polling window.



*If submitting ZIP files to a designated Network Polling directory, it is necessary to create a subdirectory. Placing a ZIP file in the root of a Network Polling directory is not permitted. If using a registered copy of WinZip, zipped files added to the Network Polling directory are automatically unzipped and sent to the Job Queue.*

### Polling for Repro Desk VIC Files

To set up a directory to poll for VIC files follow the instructions above but in Step 9 select **Mode 1** and for **Files of type** enter \*.VIC

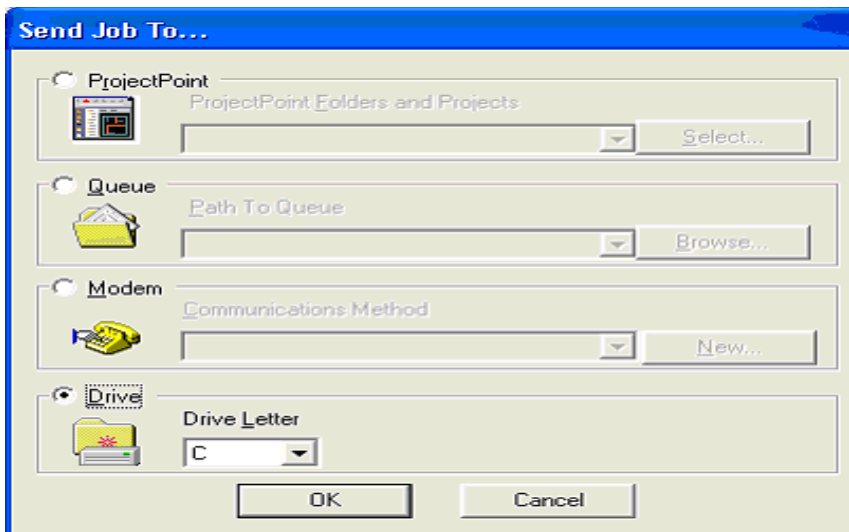
## Sending Files from Repro Desk to PlotWorks

Jobs are sent out of Repro Desk from either the Repro Desk Client or from the Repro Desk Queue.

### Outputting Jobs from the Repro Desk Client

1. Open the Repro Desk Client and create your Repro Desk job as desired.
2. Click on the **Send Job** button. The Send Job To... dialog box opens.
3. Depending on how you wish to send the job, select one of the options from the Send Job To... dialog box.

*Fig. G. 8*  
*Repro*  
*Desk Send*  
*Job*  
*To...dialog*  
*box*



- **To a Network Drive:**
  1. Select the **Drive** radio button
  2. Select the **Drive Letter** using the drop down list.
  3. Click on the **OK** button. A Job Information window opens displaying a form.
  4. Fill in the form. Items labeled in bold are required.
  5. Click on the **Submit** button. Another Job Information window opens displaying your job information.
  6. Verify the information displayed is correct and then click on the **Send Job** button. The Job is compressed into a ZIP file named Job.zip and placed in the root of the selected drive. This ZIP file will contain the job instruction file, PEN file as well as VIC files, if

the job was processed before sending.

- **Via Modem to a preconfigured destination:**
  1. Select the **Modem** radio button and follow the instructions provided by your network administrator.
  2. Ensure that compression is selected.
- **To a Network Polling Directory:**
  1. Select the **Queue** radio button.
  2. Select the Network Polling Mode 5 directory.

If you are sending jobs to a Network Polling Directory, it is necessary to set up the directory as a Network Polling Directory first. See “Using PlotWorks Network Polling for Repro Desk Jobs” on page Appendix G-3 for more information.

The following pages provide detailed instructions on submitting jobs from Repro Desk to PlotWorks.

## Outputting VIC files from the Repro Desk Client

To submit VIC files from Repro Desk the original image files must be processed first. To process an image file either click the **Process** button on the Repro Desk toolbar or view the image file in Repro Desk. Then click on the Repro Desk **Send Job** button to send the VIC files to PlotWorks.



*If you view files in Repro Desk using their built-in viewer but do not select Send Job, the VIC files are deleted by Repro Desk and are not named in the Job files, nor are they then accessible to PlotWorks. .*

---

## Outputting Jobs from the Repro Desk Queue

You can send jobs from the Repro Desk Queue to a Network Polling Mode 5 Directory. To do so, designate the Network Polling Directory as your new Repro Desk Queue. Then open the original Repro Desk Job Queue, and send the job to the new “Network Polling Queue”.

### To designate the Network Polling Directory as the new Queue:

1. Open the Repro Desk Client and click on the Repro Desk **Queue** button.
-

*Fig. G. 9*  
*Repro*  
*Desk*  
*Queue*  
*Menu*



2. Select **Create New Queue**. The Queue Creation Wizard dialog box appears. Follow the prompts and select the Network Polling Mode 5 directory you wish to designate as the new Queue. Name this Queue appropriately for example “Network Polling Queue”.

### **Sending the Job from the Repro Desk Queue to the Network Polling Queue**

1. Open your Repro Desk Job Queue. By default this is named “Incoming”.
2. Right click on the job you wish to send to the Network Polling Queue.
3. Select **Move Job To Queue** if you wish to move the job deleting it from the original Queue. Select **Send Entire Job To Queue** if you want to send the job to the Network Polling Queue without deleting the job.

Once the job arrives in the Network Polling Mode 5 Directory it is sent to PlotWorks for printing.

### **Importing Repro Desk Job files**

There are two ways to bring a Repro Desk job into PlotWorks. You can open Repro Desk jobs in the Job Editor or you can use Network Polling.

#### **Opening Repro Desk JOB Files in the Job Editor**

The PlotWorks Job Editor can be used to open, edit, and submit Repro Desk jobs to the PlotWorks Job Queue for printing. If the Repro Desk job file is received as a ZIP file it is necessary to extract it first.

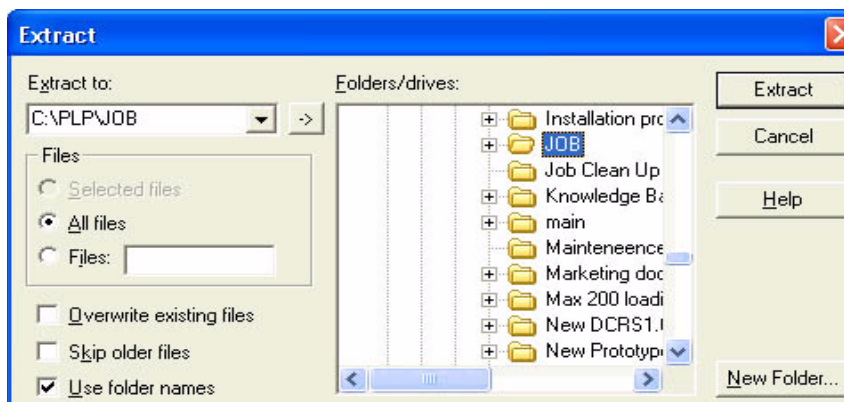


### Extracting the zipped files

If the Apprentice job is received as a ZIP file it is necessary to have a file extraction utility, like Power Archiver or WinZip, installed on your computer. It is necessary to extract the files before you can open the job in the Job Editor. To extract the files, follow the instructions below. Please note that instructions provided are generic. Your extraction utility may work differently.

1. Right click on the Windows **Start** button.
2. Select **Explorer** from the right click menu. The Windows Explorer window opens.
3. Navigate to the directory containing the zipped file.
4. Right click on the zip file. The right click menu displays.
5. Select **Extract to ...**. The Extract dialog box opens.

*Fig. G.10*  
*Win ZIP's*  
*Extract*  
*Dialog*  
*Box*



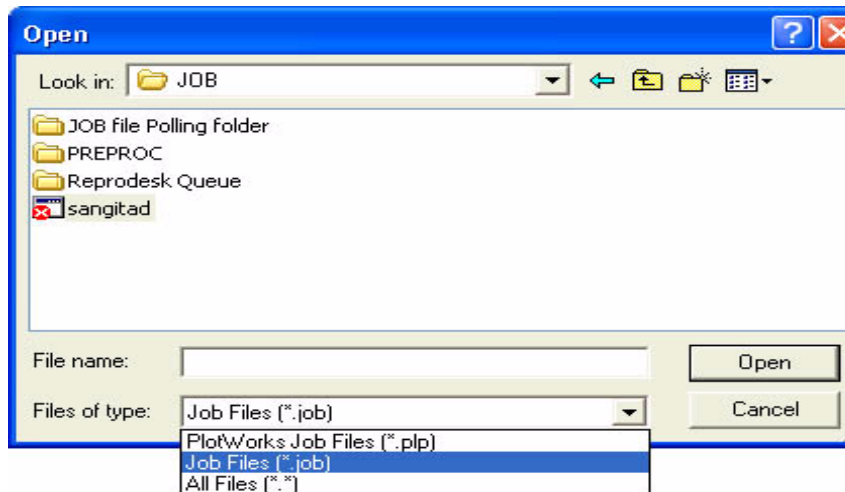
6. From the **Folders/drivers** select box, select a directory to extract the files into.
7. Click on the **Extract** button. Your image and job files are extracted and placed in the selected directory.

### Opening and outputting a JOB file using the Job Editor

To open a JOB file, follow the instructions below.

1. Open the **Job Editor** if it is not already open.
2. Click on the **Open Job** button. The Open dialog box displays.

*Fig. G. 11  
Open  
dialog box  
displaying  
the Files of  
type drop  
down list*



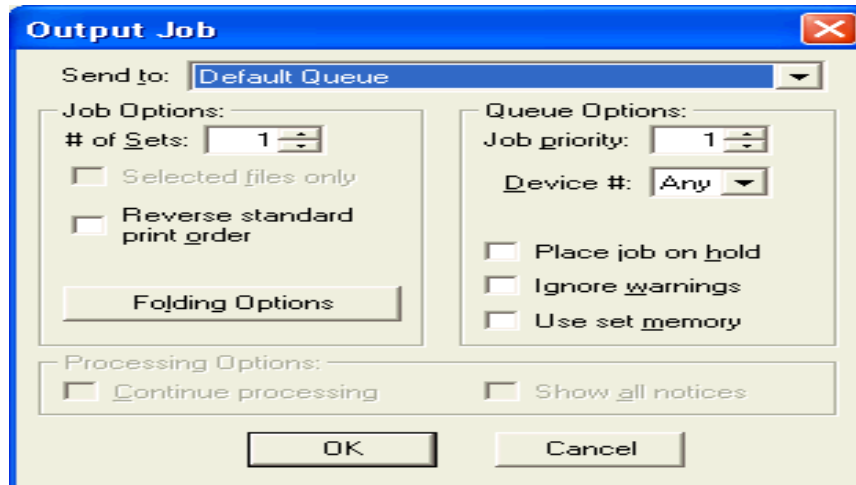
3. Select **Job Files (\*.job)** from the **Files of type** drop down list.
4. Click in the **Look in** drop down list and select the directory containing the Apprentice JOB file. The JOB file is displayed in the select box.
5. Double click on the desired JOB file. The job is opened in the Job Editor Job Grid. PlotWorks settings that are not defined in the Repro Desk JOB file are auto-detected or are assigned the parameters assigned to the prototype line. A Warning dialog box also opens displaying warning messages that pertain to the JOB file import process.



*Repro Desk and PlotWorks jobs are slightly different. Therefore when a JOB file is opened, PlotWorks will display a Warning dialog box that lists any differences that are noted. To ensure the job is printed as desired you should examine these warnings from within the Job Editor. For more information see "Warnings and Other Print Parameter Issues " on page Appendix G-16.*

6. Select PlotWorks print parameters as desired. Specifically address the print parameters mentioned in the Warning dialog box. For more information on how to set print parameters in the Job Editor, click on the Job Editor Help menu or refer to the PlotWorks User Guide.
7. Click on the **Output** button. The Output Job dialog box opens.

Fig. G.12  
Output Job  
dialog box



8. Select your output options.



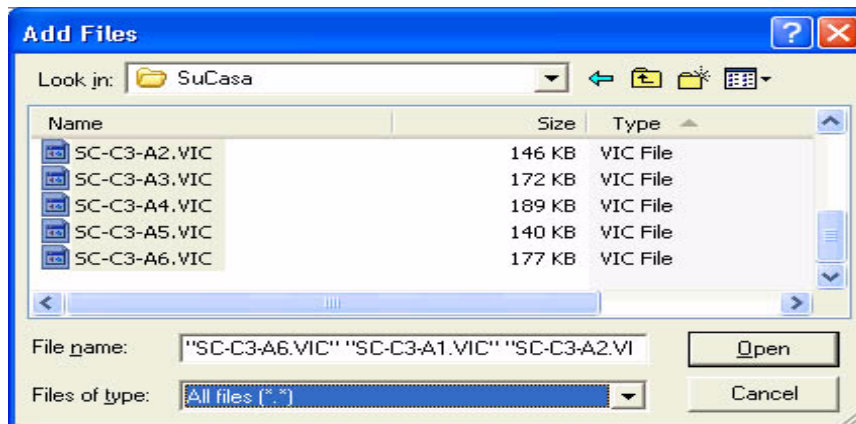
*Job files are imported into the Job Editor with the maximum Quantity or copy count set at 9,999.*

9. Click on the **OK** button to send the job to the selected output destination. This is usually the Job Queue so that the job can be printed.

### Adding and outputting VIC Files using the Job Editor

1. Open the Job Editor if it is not already open.
2. Click on the **Add Files** button. The Add Files dialog box opens.

Fig. G.13  
Add Files  
dialog box  
with  
several  
VIC files  
selected



3. Use the **Look in** drop down list to select the directory containing the VIC files.
4. Select the desired VIC files.
5. Click on the **Open** button. The Add Files dialog box disappears and the selected VIC files are added to the Job Editor Job Grid.



*Pen files are not included when adding VIC files. to the Job Editor. Therefore, when VIC files are added to the Job Editor using the **Add Files** option, all pen parameters and macros must be manually set in PlotWorks.*

---

6. Select your printing parameters and output the job as you would any other PlotWorks job.
-

## Repro Desk Pens and Patterns

### Repro Desk Pen Properties and the PlotWorks Equivalent

The Repro Desk Client offers options for Pen Sets in their Pens tabbed dialog box. In PlotWorks these options are specified using Pen Macros. The following table lists the PlotWorks Pen Macros and their Repro Desk equivalent.

<b>PlotWorks Pen Macro</b>	<b>Option from the Controls tab of the Repro Desk Pen dialog box</b>
B	<b>Pen Colors</b> is not selected. (Pen colors are not mapped to a shaded halftone.)
C	<b>Pen Colors</b> is selected. (Pen colors can be manipulated and are acquired from the plot file.)
E	<b>Pen Screens &amp; Patterns</b> is selected. (Pen screens and patterns can be manipulated and are acquired from the plot file.)
F	<b>Fill Screens &amp; Patterns</b> is selected. (Fill screens and patterns can be manipulated and are acquired from the plot file.)
G	<b>Pen Colors</b> is not selected and <b>Map Pen Colors to a Shaded Half tone</b> is selected. (Pen colors are mapped to a shaded half tone.)
M	<b>Pen Colors</b> is selected.
R	<b>Use Error Diffusion for Gray or Color RTL images</b> is selected.
T	<b>Pen Effect (Transparency)</b> is selected. (Pen types and effects can be manipulated and are acquired from the plot file.)
W	<b>Pen Widths</b> is selected. (Pen widths are acquired from the plot file.)
X	<b>Pen Colors</b> is selected and <b>Map Pen Colors to a Shaded Half tone</b> is not selected. (Pen colors are not mapped to a shaded half tone.)

---

Z	<b>Use Error Diffusion for Gray or Color RTL images</b> is not selected. (Progressive Pattern Dither for gray or color RTL images is used.)
---	---

## PlotWorks Pen Macros not supported by Repro Desk

The following PlotWorks Pen Macros do not have a Repro Desk equivalent:

<b>PlotWorks Pen Macro</b>	<b>Description</b>
N	Do not scale RTL raster data
Y	Use alternate fill instead of winding fills for polygons

## Importing Repro Desk Pattern Files

Repro Desk is installed with 127 default pattern files. Repro Desk users can modify these default patterns and assign them numbers from 128-255. This custom set of patterns is saved as a \*.SET file. If a Repro Desk job uses these modified patterns, the SET file should be imported into PlotWorks to ensure the job prints correctly.

Once these pattern files are imported into PlotWorks, all subsequent print jobs will use this imported pattern set until you revert to the default pattern set. Imported patterns can create undesired effects on print jobs that do not use the imported pattern set. Therefore, revert to the standard patterns after printing jobs that required the custom pattern set.

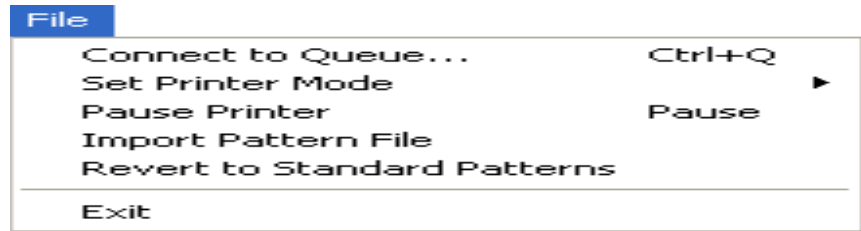


*Pattern files are not automatically submitted with a Repro Desk job. Pattern files must be imported manually.*

## Importing a User Defined Repro Desk pattern

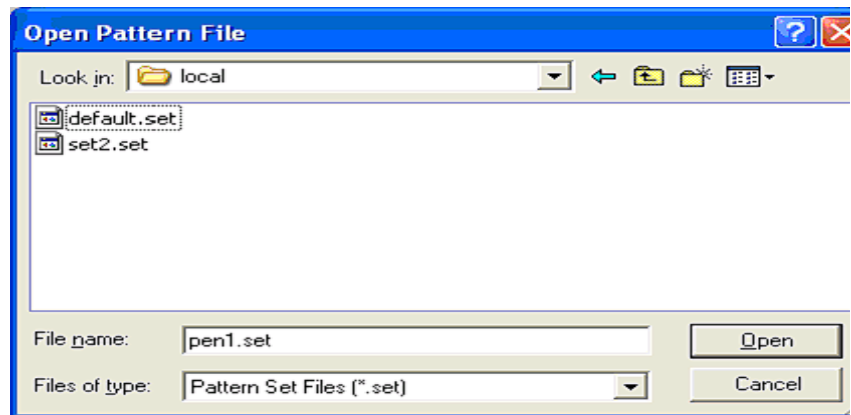
1. Open the Printer Interface if it is not already open.
2. Pause or Stop the Printer Interface ensuring no print jobs are pending.
3. Click on the **File** menu.

*Fig. G.14  
The  
Printer  
Interface  
File menu*



4. Select **Import Pattern File**. The Open Pattern File dialog box opens.

*Fig. G.15  
The Open  
Pattern  
File dialog  
box*



5. Using the **Look in** drop down list, select the folder containing the pattern file.
6. From the **Files of Type** drop down list, select **Pattern Set Files (\*.set)**.
7. Double click on the pattern file. The file is imported.

Repro Desk pen patterns are assigned pattern numbers from 250 through 505 in PlotWorks. So if you select pattern number 254 in PlotWorks you are actually selecting Repro Desk pattern number 4.

## Reverting to the Default Standard Patterns

1. Click on the **File** menu.
8. Select **Revert to Standard Patterns**

Now the standard set of patterns included with PlotWorks is used.

## Warnings and Other Print Parameter Issues

### Warnings

The various warnings generated by PlotWorks are documented alphabetically below.

#### **100% Normal, 50% Reduction, and 200% enlargement may not be fully supported**

If 100% Normal, 50% Reduction, or 200% enlargement is specified, the resulting print size may not be exactly what was expected.

#### **Address was truncated to 40 characters**

The Delivery Address field is limited to 40 characters

#### **AutoCAD option to use saved extents is not currently supported**

The Repro Desk option "use saved extents" is not currently supported.

#### **City was truncated to 25 characters**

The Delivery City field is limited to 25 characters

#### **Color is not available on some file types**

Some file types cannot be printed in color with PlotWorks unless a color RTL printer is used.

#### **Different folds for each document in the job ticket is not supported. The first document's folding parameters will be used for all documents in the job ticket**

PlotWorks does not currently support more than one fold type for documents contained in a job ticket. The fold settings specified for the first file is used for all the files in the job.

#### **File could not be found at the original path nor the JOB directory**

This message displays if the file does not exist, or isn't found in the original directory specified by the Repro Desk job ticket, nor can it be found in the same directory as the job file.

#### **Folding packet height is not currently supported and will be defaulted**

PlotWorks does not yet support a packet height size.

#### **Invalid pen set file**

The pen set file contains an incorrect signature therefore it cannot be used.

---



**Inversion not currently supported for all data formats**

PlotWorks currently only supports inversion for some file formats.

**Job Instructions were truncated to 80 characters**

The Instruction field is limited to 80 characters.

**Job Instructions will be truncated in order to add the PO Number and not exceed 80 characters**

The Job Instruction field is limited to 80 characters. However, if a value is also provided for PO Number, PlotWorks further truncates the Job Instructions and appends the PO Number. Combined, the PO Number and Job Instructions cannot exceed 80 characters.

**Number of sets is out of range (1-9999) and will be set to 1**

If the number of sets specified in Repro Desk is larger than 9999 it is reset to 1 in PlotWorks. PlotWorks has a 9999 set limit.

**Only error diffusion is currently supported for RTL images**

The "Use error diffusion" checkbox in Repro Desk was deselected in the pen set for this image. PlotWorks only uses error diffusion for RTL images.

**Only ten overlays per file are currently supported. The rest will be skipped"**

Ten is the maximum number of overlays that can be applied on one file.

**Only the first entry of the overlay file with the same name will be used. The others will be ignored"**

If an overlay with the same name is applied to multiple files in a job ticket, only the first overlay file listed in the job ticket, including any alignment, rotation, or other specified parameters will be used.

**Pen effect XOR is not currently supported and will be defaulted.**

The pen effect "XOR" is not currently supported in PlotWorks.

**Pen number [] was expected but number [] was gotten instead. Pen set file may be corrupt**

An error occurred while attempting to read an entry in the pen set file. Check for network or storage problems, or recreate the pen set file.

**Pen set file appears corrupt since entry number [] could not be read**

An error occurred while attempting to read an entry in the pen set file. Check for network or storage problems, or recreate the pen set file.

---

**Pen set file appears to be truncated and corrupt**

The pen set file is not usable.

**Quantity is too large and will be truncated to 9999**

If the quantity (copy count) for a file is higher than 9999, then PlotWorks resets it to 9999.

**Rotation, alignment and left margin may not work correctly if file has not been processed and specified size has different orientation than the image file"**

To ensure that the file is printed correctly process the drawing in Repro Desk first. Otherwise the alignment, rotation and left margin may be affected.

**Stamp files are not currently supported, but can be manually added using a watermark or label**

Currently PlotWorks does not support LBL Files. These are the Apprentice Stamp files. However, you can add a similar stamp using the Job Editor's Watermark, Label, and Overlay property sheets.

**State/Country was truncated to 25 characters**

The Delivery State and Delivery Country fields are combined and limited to 25 characters.

**Unable to correctly position the image because file has not yet been processed**

The original image size is not yet known, as the file has not yet been processed, therefore the alignment may not be applied correctly.

**Unable to correctly scale this alignment because file has not yet been processed**

The original image size is not yet known, as the file has not yet been processed, therefore the alignment may not be scaled correctly.

**Unable to find a matching pen color. Black will be used**

A matching color is not found in the PlotWorks pen set color palette therefore black will be used.

**Unable to find a matching pen color. The closest color found will be used**

PlotWorks does not support the full pen set RGB colors. Pen color will be matched to the closest color in the PlotWorks pen set color palette.

---

**Unable to open pen set file to read in the pen set. Using default pen set**

The specified pen set file cannot be opened or read. Ensure the file is not in use or corrupted.

**Unable to read \*.Job file entry**

An error occurred while reading the job file.

**Unable to remove borders because file has not yet been processed**

To remove borders, the file needs to be processed in Repro Desk first to create a VIC file.

**Unable to do title block alignment because file has not yet been processed. Using centered instead**

The original image size is not yet known, as the file has not yet been processed, therefore the title block alignment may not be scaled correctly.

The file needs to be processed in Repro Desk.

**Unknown AutoCAD plot by option. Using extents**

A plot by option is not recognized and plot by extents will be used instead.

**Unknown media type [] being translated to Bond**

The media type selected in Repro Desk is not known and Bond will be used instead.

**Unknown orientation - assuming normal orientation**

The specified orientation is not recognized so the default orientation will be applied.

**Unknown pen effect will be mapped to default**

An unknown pen effect type is detected and set to default (transparent) in PlotWorks.

**Unknown special alignment option was used. Using centered instead**

The specified alignment option is not recognized therefore centered alignment will be used.

**Unrecognized folding option. No folding will be set**

The specified fold option is unrecognized and no folding parameters have been applied.

**Unsupported \*.Job file version**

Only Repro Desk versions 103 and 104 job files are supported. Also only

---

Repro Desk software versions 4.25, and 4.30 are currently supported.

**Unsupported media type (Bond 110g, \*Bond, or \*Bond 110g) is translated to Bond**

The media type selected in Repro Desk is not currently supported and Bond will be used instead.

**Unsupported media type (Trans. 110g) being translated to T-Bond**

The media type selected in Repro Desk is not currently supported and T-Bond will be used instead.

**Unsupported media type (Film 4.5mil) being translated to Mylar**

The media type selected in Repro Desk is not currently supported and Mylar will be used instead.

**Unsupported pen set file version**

The pen set file version is not version 100. This is currently the only supported pen file version.

**User-defined patterns require manual importing of the pattern file before printing the job**

User-defined patterns (numbers 128-255) are used in the pen set. These patterns need to be imported into the Printer Interface via the pattern set file before printing.

**Zip files are not currently supported. Please unzip the files and add them manually**

Unzip the zip file and then add it to either the Repro Desk or PlotWorks job ticket.

**Zip was truncated to 25 characters**

The Delivery Zip field is limited to 25 characters

**Zoom percentage was too large and has been truncated to 10,000%**

If a zoom percentage greater than 10000% is selected, PlotWorks reduces it to 10000%.

**Print Parameter Issues**

**AutoCAD DWG files**

The Repro Desk AutoCAD default font, font path and Xref settings are ignored and PlotWorks settings are used instead.

---

**View name** is transferred to the PlotWorks View name, only if Plot by View is selected.

### **Folding parameters**

Fold Enable, Binding Edge, Folding Width, Cross fold, Punch, and Reinforcement options from Repro Desk are supported regardless of the folding program used. PlotWorks will automatically add the following macros to support folding options set in Repro Desk.

- The "E" fold macro is applied for the Ericsson folds.
- The "A" fold macro is applied for the AFNOR folds.
- The "S" pen macro is applied for Portrait fold orientations.

Ericsson and Afnor folding options are not supported for older folders.

Landscape orientation or free-fit settings have no effect if Portrait orientation is set in folding options as Portrait orientation overrides these settings.

Fold program number has no equivalent in a PLP file and is ignored.

If a Repro Desk Fold Option is not understood, the user is warned and folding is deselected in PlotWorks.

### **Overlays**

If the same overlay is applied on more than one file of a Repro Desk Job Ticket and the job is then opened in the PlotWorks Job Editor, the overlay is listed multiple times. However, only the first overlay listed in the job ticket, and its specified print parameters, is applied to all the files.

### **PEN files**

Pen settings for JOB files are stored in a .PEN file. PlotWorks supports the Repro Desk PEN files with the following limitations:

- Pen files cannot be opened in PlotWorks.
  - If Pen Colors, Pen Screens and Patterns, Fill screens and Patterns, or Pen Effects is selected in Repro Desk, the "C" macro is applied for Pen Colors settings, "E" macro for Pen Screen and Patterns, "F" macro for Fill screens and Patterns, and the "T" macro for Pen Type or effect.
  - The "K" pen macro is added when HPGL2 files are output from Repro Desk.
-

- To print highlight red from PlotWorks, define the desired pen color as red in your plot file.
- PlotWorks uses transparent for XOR pen effects.
- Using Alternate Fill instead of Winding Fill for Polygons option in the pen set is not currently supported since PlotWorks derives this information from the HPGL2 file.
- PlotWorks does not support Full RGB Pens in a pen set. If the pen is in an HPGL2 file it is supported.

**Pen patterns**

Pattern files are not transmitted with the job submission and must be copied manually for pattern changes to take effect.

Pen pattern names are discarded, since PlotWorks does not support pattern names for pattern numbers.

**RTL images**

PlotWorks only supports Error diffusion for grayscale and color RTL images. Therefore when the Error diffusion check box is deselected, PlotWorks ignores it and notifies you with a warning.

The Repro Desk option, "Do not scale RTL raster data" is not supported by PlotWorks currently.

**Specified Size**

When a combination of rotation and alignment is applied, the Specified Size is increased so that PlotWorks can produce the desired output. This may generate processing warnings in the Job Queue.

**Title Block Orientation**

Title block orientation is supported, but requires the drawing be preprocessed. If the drawing is not preprocessed, a warning message is recorded and centered orientation is used.

**Use Saved Extents**

The option to "Use saved extents" is not currently supported. If selected in Repro Desk, a warning message is recorded.

---

### **User Information**

- Contact Name, Company, Account Number, Project, Phone Number, PO Number, Delivery Address, Delivery City, Delivery State, Delivery Country, Delivery Zip, Comment, and Additional Number of Sets are supported. However PlotWorks does not currently support the full possible size of these entries.
- The Contact Name is limited to 63 characters
- The Company Name is limited to 40 characters
- The Account Number is limited to 25 characters
- The Project Name is limited to 25 characters
- The Phone Number is limited to 25 characters
- The Comment (Job Instructions) and the P.O Number are combined and limited to 80 characters. The comment is truncated to allow spaces for the P.O Number.

If entered user information exceed its allocated character limit, additional characters are truncated and a warning is displayed.

### **Zoom options**

Zoom options are supported up to a maximum 10,000% value.

## **PlotWorks Settings Not Supported by Repro Desk**

There are a number of PlotWorks settings that are not supported by Repro Desk Job files. These include: Output Quality, Fill Space, Overlay Offsets, Watermarks, Labels, Top, Bottom, and Right Margins, Finishing Margin, and many data format specific options such as for Calcomp files, HPGL2 resolution, etc. PlotWorks will either auto-detect these settings or default them to values from the Prototype line

## **Printing differences between Repro Desk and PlotWorks**

### **Alignment**

If an image is left aligned in Repro Desk and rotation is set at 90 or 270 degrees, the image becomes right aligned.

If left margin is selected and alignment is set as centered at 0 or 180 degree rotation, Repro Desk shifts the image off the page by a variable amount. This does not occur with Repro Desk when 90 or 270-degree rotation is selected. PlotWorks does not shift the image regardless of the rotation selected.

### **Image density**

Compensate for differences in image density by adjusting the gamma correction settings in the Printer Interface. The amount of correction necessary is dependent on the printer used and customer preferences. For more information refer to page 8-34.

### **Map Pen Colors to a Shaded Halftone**

Test cases using the sample SuCasa files, showed that when "Map Pen Colors to a Shaded Halftone" was selected, Repro Desk did not print certain sections of the drawings. Also 0.06mm line weights caused fills to disappear in some areas. In these cases PlotWorks output was superior and consistent.

### **Pen Lines**

If pen lines are printing too thin, deselect Reduce pen widths from the Printer Interface, Device Specific Options dialog box. For more information see page 8-17.

### **Postscript/PDF prints**

Postscript/PDF prints often look better when printed with PlotWorks. This is because in PlotWorks, Postscript/PDF resolution can be manually set to any number, individually, per drawing. This reduces or eliminates undesirable patterns

---



when scaling by a fractional pixel replication. Postscript/PDF resolution can also be automatically set based on how much the drawing is being enlarged or reduced for output. Job files do not contain dynamic resolution values, therefore the prototype's setting is used to determine whether to automatically set the resolution or set it to a user-defined value.

